

## The White House

---

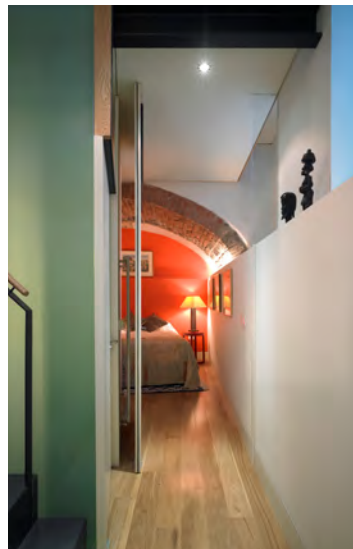
The main construction phase of the White House on the Isle of Coll is now complete. We have charted the construction of the house from the start to occupation on our website, and you can link to this page by clicking [here](#). The house is in three main sections, one occupying part of an original eighteenth century ruin which needed extensive consolidation. This photo shows the new west wing which shelters behind a new stone wall. Our contractor, Spey Building & Joinery of Kinghussie, have been fantastic, braving storm, flood, ferries, dark winter nights & then drought.



## Awards

---

Our partly subterranean mews house in Edinburgh's [Circus Lane](#) was completed beautifully by Inscape Joinery at the end of last year & has since picked up both Conversion of the Year & the Architectural Excellence Award at the Scottish Homes Awards 2010, an Edinburgh Architectural Association Commendation & a current shortlisting for the Saltire Society Housing Awards. Our [Newhaven Extension](#) followed its EAA Award win with a Saltire Award Commendation at the end of last year.



## Queensferry Studio

---

This stand alone [studio in South Queensferry](#) was finished last year. It is tucked into the hillside at the top of a long rig garden, & contains ancillary space for the main house: a main living space, a tiny kitchen, shower room & bedroom. Long outrigger walls & steel edges sedum roofs tie it into the garden landscape.



## Sorisdal House

---

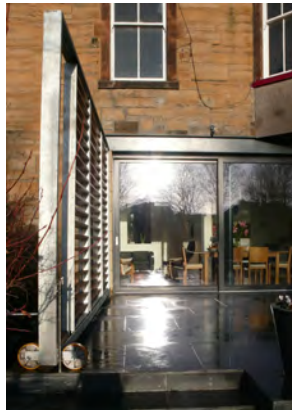
The second of three projects completed on the Isle of Coll this year. The **Sorisdal House** echoes the traditional blackhouses in the village in which it sits, overlooking a sheltered bay. The seaward side of the house has large expanses of glass while the landward SW side is more closed & sheltering with a deep covered entrance terrace. The house was immaculately built by H.K Thorburns with Patrick Rutherford & Tom Davies undertaking stonework.



### Also completed...

---

An extension to Airidh Garbh on Coll (far right) provides a new living-dining room & a sheltering wall to the garden. The crinkly tin roof and whitewashed walls tie in with the original cottage. **Murrayfield House** in Edinburgh has a new living-dining-kitchen space connecting into its garden through a new glazed wall. Oak louvres screens provide shading & privacy.



### Coming soon...

---

A substantial extension & alterations to a seafront house in Aberdour (below left & [on our web site](#)) will go on site in the autumn & should be complete next spring. Our designs for the reconfiguration of a house overlooking the Firth of Tay at Wormit (below right & [on our web site](#)) incorporating a tall frameless glass bay window should be complete on site by the end of the year. A simple but elegant extension to a house in Edinburgh's Morningside (below middle) has received planning permission & will also be on site this autumn.



## New Projects

---



We have produced designs for the reorganisation & extension of Project Trust's offices at Ballyhough on the Isle of Coll ([above left and click here for more images on our web site](#)). The building extends the original steading complex which was converted in the 1990's to provide offices, accommodation & training facilities for the gap year volunteers that the Trust sends around the world. The proposals will shortly be submitted for planning approval. Back in Edinburgh we have a new intricate remodeling of a flat in Inverleith ([above right](#)). We are proposing the careful peeling away of stone walls from around a tiny courtyard garden to liberate this basement flat from the darkness.

A substantial new extension has been designed for a house in Edinburgh's Trinity ([below left](#)). The new spaces slide out from the existing back rooms of the Victorian terraced house drawing the house deep into the very long thin garden. Elsewhere designs are at an early stage for an artist's studio just outside Glasgow ([below right](#)). The new stand alone building forms a new side to an enclosed walled garden.



## People

---

We are delighted that Tamsin Cunningham is to become an Associate. Tamsin has been working with WTArchitecture since leaving university in 2006 & has been Project Architect on the White House, Sorisdal House & GRV amongst others. Susie Moss-Langfield is also congratulated for completing her qualification as an Architect. We say goodbye this month to Marta Garcia from Valencia who we have enjoyed having with us over the last six months. We will be joined by Emma Paaso from Finland in September.

## WTA on Facebook

---

To those of you so inclined we now have a WTArchitecture Facebook page where we regularly post news & comment on things both WTA orientated and of more general architectural interest. If you want to follow us click [here](#) to go to the page or if you are already registered to Facebook search for the WTArchitecture page & click 'like'. Our own web [news page](#) continues to be updated with WTA news.